



GAT MONTHLY MEMBERSHIP PROGRESS REPORT

Results as of: 6/30/2023

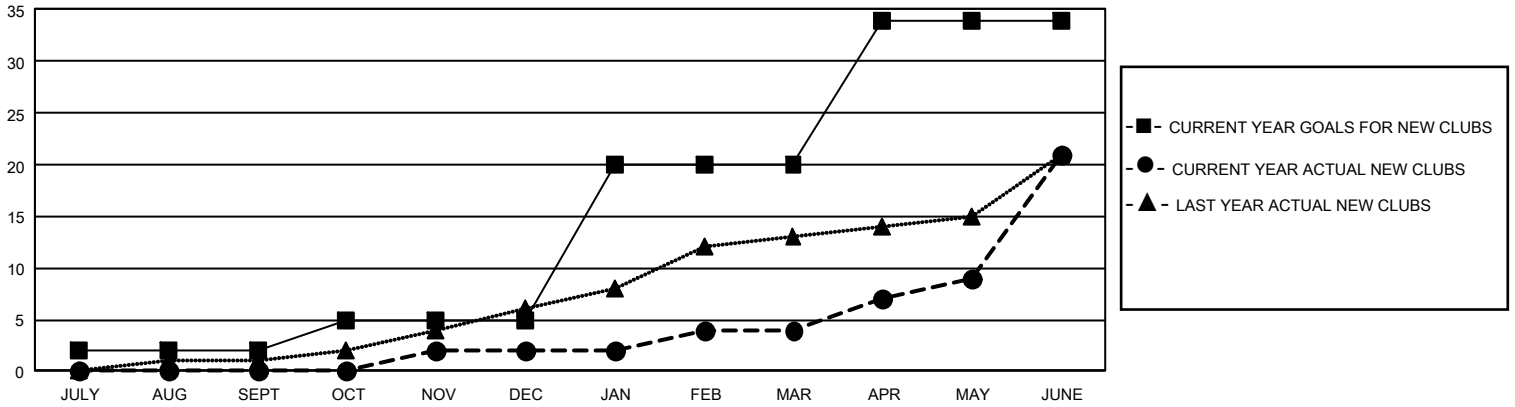
GMT Constitutional Area 4, Group E

REPORT DOES NOT INCLUDE CLUBS IN UNDISTRICTED AREAS.

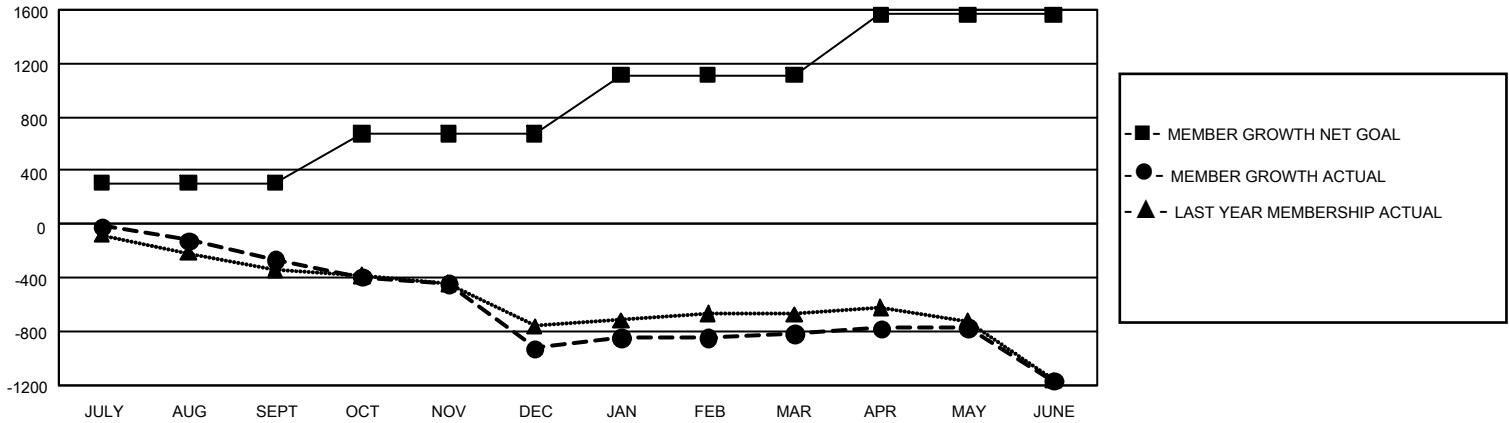
Clubs			
RESULTS FOR 2022-2023			
QUARTER	NEW CLUB GOAL	NEW CLUBS	DROPPED CLUBS
JULY/AUG/SEPT	6	0	26
OCT/NOV/DEC	9	2	9
JAN/FEB/MAR	45	2	14
APR/MAY/JUNE	42	17	6

Members			
RESULTS FOR 2022-2023			
QUARTER	MEMBER GROWTH NET GOAL	MEMBER GROWTH ACTUAL	DROPPED MEMBERS ACTUAL (including transfers)
JULY/AUG/SEPT	309	440	602
OCT/NOV/DEC	367	676	1,195
JAN/FEB/MAR	437	947	669
APR/MAY/JUNE	450	1,447	1,555

GOALS AND ACTUAL NEW CLUBS CUMULATIVE



GOALS AND ACTUAL MEMBERS CUMULATIVE



DROPPED CLUBS: 54	976 CLUBS OF 1,574 ADDED 1 OR MORE NEW MEMBERS	<u>GENDER DISTRIBUTION</u>	
		MALE 23,800 (74.21%)	FEMALE 8,270 (25.79%)
<u>DROPPED MEMBERS</u>		NON BINARY 0 (0.00%)	PREFER NOT TO ANSWER 0 (0.00%)
DECEASED 374	CLICK HERE FOR CUMULATIVE MEMBERSHIP DATA	TOTAL FAMILY UNIT MEMBERS 1,453	
CLUB CANCELLED 228		FAMILY MEMBERS PAYING HALF DUES 734	
OTHER 3,420			
TOTAL 4,022			